

# RAPPAHANNOCK-RAPIDAN REGIONAL COMMISSION

## FACTS AND FIGURES • OCTOBER 2009



**Rappahannock-Rapidan**  
**REGIONAL COMMISSION**

www.rrregion.org  
www.rrcommute.org  
www.theviriniapiedmont.org

The Rappahannock-Rapidan Region is located in Virginia's Northern Piedmont Region, in the foothills of the Blue Ridge Mountains. The five counties that make up the region—Culpeper, Fauquier, Madison, Orange and Rappahannock—cover 1,965 square miles and are home to 168,180 persons.

The Rappahannock-Rapidan Regional Commission serves as an affiliate State Data Center, in conjunction with the Virginia Employment Commission, and collects and maintains demographic, economic and other data for the region.

### DEMOGRAPHIC SUMMARY

#### POPULATION

1980 CENSUS: 92,987  
1990 CENSUS: 116,643  
2000 CENSUS: 134,785  
2008 (PROVISIONAL): 168,180

#### INCOME

Per Capita Personal Income (1995): \$23,723  
Per Capita Personal Income (2000): \$31,009  
Per Capita Personal Income (2007): \$39,551

#### AVERAGE HOUSEHOLD SIZE

1990: 2.76 persons  
2000: 2.60 persons

Sources: US Census, Weldon Cooper Center, US Bureau for Economic Analysis

### LOCAL GOVERNMENT SUMMARY

#### GOVERNMENT

COUNTIES - BOARDS OF SUPERVISORS

TOWNS - TOWN COUNCILS

#### REAL ESTATE TAX RATES (FY 2010)

\*per \$100 assessed value

COUNTIES: Culpeper - \$ 0.65, Fauquier - \$ 0.765,  
Madison - \$ 0.44, Orange - \$ 0.47, Rappahannock - \$ 0.58

TOWNS: Culpeper - \$ 0.11, Gordonsville - \$ 0.095,  
Madison - \$ 0.105, Orange - \$ 0.114, Remington - \$ 0.10,  
The Plains - \$ 0.04 Warrenton - \$ 0.015, Washington - n/a

**BANK DEPOSITS:** \$2.27 Billion

Source: Localities, FDIC

### POPULATION CHANGE (County & Region): 2000 - 2008

	2000 POPULATION	2008 POPULATION (PROVISIONAL)	POPULATION CHANGE (+/-)	POPULATION CHANGE (%)
CULPEPER	34,262	47,517	13,255	38.7 %
FAUQUIER	55,139	66,801	11,662	21.1%
MADISON	12,520	13,832	1,312	10.5 %
ORANGE	25,881	33,105	7,224	27.9 %
RAPPAHANNOCK	6,983	6,925	-58	-0.8 %
<b>REGION</b>	<b>134,785</b>	<b>168,180</b>	<b>33,395</b>	<b>24.8 %</b>

Source: U.S. Census Bureau, Weldon Cooper Center

Compiled and published by the Rappahannock-Rapidan Regional Commission, 420 Southridge Parkway, Suite 106, Culpeper, VA 22701

Phone: (540) 829 7450 Fax: (540) 829 7452 Website: www.rrregion.org Email: planinfo@rrregion.org

Permission to copy this profile is granted. RRRC assumes no liability for accuracy of, use of, or inability to use this publication, information or data.

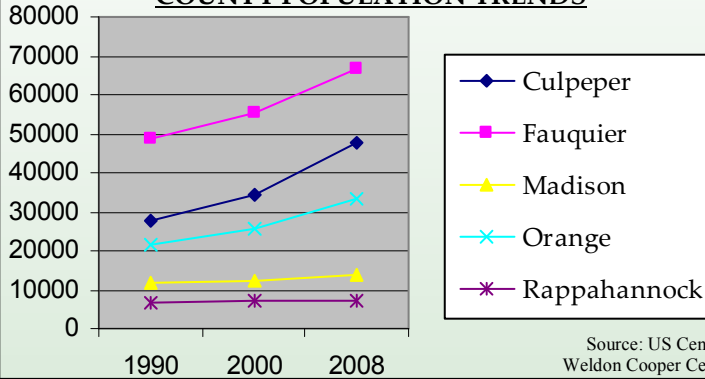
**SALE OF THIS DOCUMENT IS PROHIBITED**

### INCORPORATED TOWN POPULATIONS

Town	1990	2000	2008 (EST)
Culpeper	8,581	9,664	13,977
Gordonsville	1,351	1,498	1,697
Madison	307	210	212
Orange	3,579	4,123	4,629
Remington	460	624	673
The Plains	219	266	286
Warrenton	4,882	6,670	8,947
Washington	198	183	172

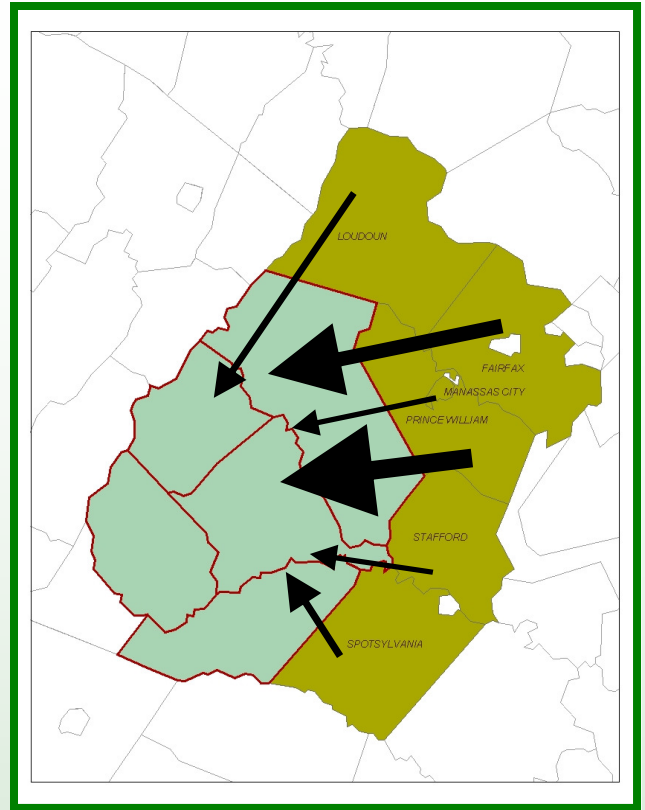
Source: US Census Bureau

### COUNTY POPULATION TRENDS



Source: US Census, Weldon Cooper Center

### MIGRATION PATTERNS INTO THE RAPPAHANNOCK-RAPIDAN REGION



### POPULATION PROJECTIONS

County	'08 (prov.)	2010	2020	2030
Culpeper	47,517	48,074	61,255	75,221
Fauquier	66,801	72,685	89,318	107,168
Madison	13,832	14,105	15,624	17,222
Orange	33,105	34,127	42,021	50,732
Rappahannock	6,925	7,593	8,242	9,066
<b>R-R Region</b>	<b>168,180</b>	<b>176,584</b>	<b>216,460</b>	<b>259,409</b>

Sources: Weldon Cooper Center; Virginia Employment Commission

### MIGRATION PATTERNS (2000-2007)

#s of Persons Moving to Rappahannock-Rapidan Region, by County of Previous Address

Prince William	13,632
Fairfax	9,194
Spotsylvania	3,605
Loudoun	3,263
Stafford	2,419
Manassas City	2,362

Source: IRS

### PUBLIC SCHOOL ENROLLMENT FIGURES & PROJECTIONS

	2008-09 ENROLLMENT	2013-14 PROJECTED ENROLLMENT	ENROLLMENT CHANGE (+/-)	ENROLLMENT CHANGE (%)
CULPEPER	7,394	8,452	1,058	14.3%
FAUQUIER	11,275	12,293	1,018	9.0%
MADISON	1,870	1,965	95	5.1%
ORANGE	5,320	6,264	944	17.7%
RAPPAHANNOCK	921	805	-116	-12.6%
<b>REGION</b>	<b>26,780</b>	<b>29,779</b>	<b>2,999</b>	<b>11.2%</b>

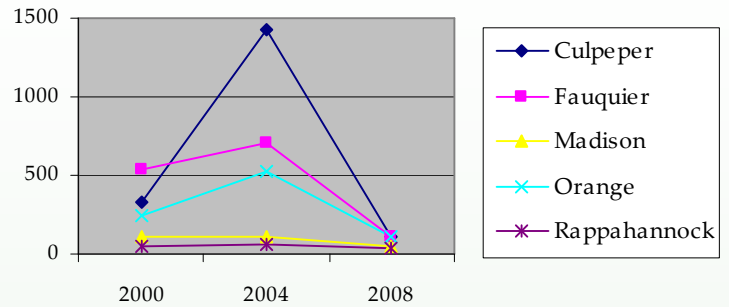
Enrollments based on September 30th membership figures; Sources: Virginia Dept. of Education, Weldon Cooper Center

### EMPLOYMENT GROWTH (%)

County	2005	2006	2007	2008
Culpeper	5.5	5.3	1.0	-0.5
Fauquier	4.6	3.2	1.6	0.9
Madison	1.5	1.6	0.9	-0.1
Orange	3.3	2.6	2.1	0.1
Rappahannock	0.8	3.8	2.0	2.8

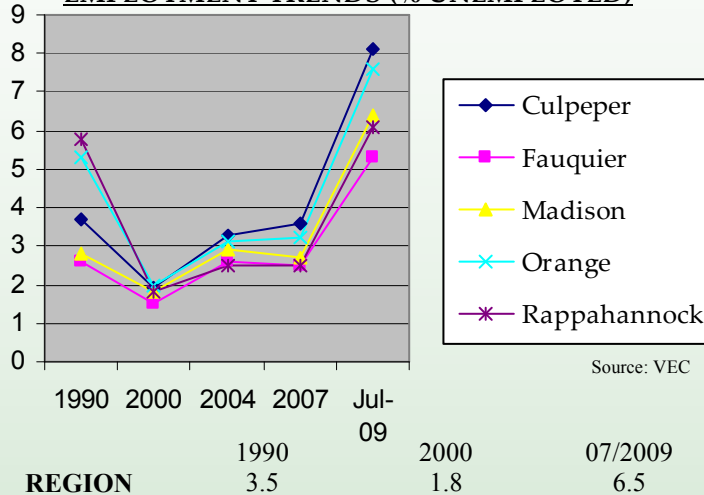
Source: FDIC

### RESIDENTIAL BUILDING PERMITS



Source: Weldon Cooper Center

### EMPLOYMENT TRENDS (% UNEMPLOYED)



Source: VEC

County	2000	2004	2008
Culpeper	334	1,428	113
Fauquier	533	703	105
Madison	106	112	45
Orange	247	526	104
Rappahannock	44	58	35

### AVERAGE RESIDENTIAL REAL ESTATE SELLING PRICE

County	2005	2007	2008
Culpeper	\$343,641	\$328,619	\$257,093
Fauquier	\$507,939	\$483,296	\$362,882
Madison	\$296,475	\$297,072	\$304,038
Orange	\$307,256	\$319,962	\$241,794
Rappahannock	\$498,353	\$401,297	\$465,200
<b>REGION</b>	<b>\$400,672</b>	<b>\$391,517</b>	<b>\$298,421</b>

Source: MRIS

### NUMBER OF HOUSING UNITS

County	2003	2005	2007
Culpeper	14,062	16,155	18,749
Fauquier	23,146	24,553	25,857
Madison	5,561	5,790	5,984
Orange	12,337	13,196	14,255
Rappahannock	3,521	3,624	3,735

Source: US Census Housing Estimates

### # OF FARMS & LAND IN FARMS, 2002 TO 2007 COMPARISON

	NUMBER OF FARMS, 2002	NUMBER OF FARMS, 2007	ACREAGE OF LAND IN FARMS, 2002	ACREAGE OF LAND IN FARMS, 2007	% CHANGE OF LAND IN FARMS, 2002-07
CULPEPER	669	667	125,121	111,370	-11.0%
FAUQUIER	1,344	1,222	238,135	222,486	-6.7%
MADISON	531	564	102,874	102,757	-0.1%
ORANGE	486	518	104,879	104,606	-0.3%
RAPPAHANNOCK	443	416	78,483	65,084	-17.1%
<b>REGION</b>	<b>3,473</b>	<b>3,387</b>	<b>649,492</b>	<b>606,303</b>	<b>-6.6%</b>

Source: 2007 U.S. Census of Agriculture

## AMERICAN COMMUNITY SURVEY

### What is the American Community Survey?

The American Community Survey (ACS) is replacing the U.S. Census decennial long form. Whereas Long Form data was collected once per decade, ACS data will be collected yearly. ACS will continue to provide estimates of demographic, housing, social, and economic characteristics that have been part of the decennial long form. Additional information is available at <http://www.census.gov/acs/www/>.

### What data is available for the Rappahannock-Rapidan region?

ACS data is released on a rolling basis, dependent upon population. In the Rappahannock-Rapidan region, data for Culpeper County, Fauquier County and Orange County is available at present. ACS data for these three counties will be updated annually in the future.

Expectations are that data for Madison and Rappahannock counties will not be available until 2011. At that time, data should also be available for the towns in the Rappahannock-Rapidan region and will also be updated annually.

## TRANSPORTATION INFRASTRUCTURE SUMMARY

The Rappahannock-Rapidan region has a strong multi-modal transportation infrastructure in place. U.S. Routes 15 & 29 run north to south through the region, providing a connection for points south with the Northeast Corridor cities of Washington, New York and Boston. Several east-west routes also serve the region, including Interstate 66 and U.S. Routes 17 and 522. Interstates 81 and 95 are both less than 30 miles away from the heart of the Rappahannock-Rapidan region.

Major rail corporations Norfolk Southern and CSX Railroad both own and operate freight transportation on existing rail lines that connect Washington, D.C. with central Virginia and the Southeast United States. Amtrak also runs two of its existing lines—the Cardinal and Crescent routes—through the region and a daily train from Lynchburg to Washington now stops in Culpeper.

Four publicly-owned airports also serve the region, with general aviation services the primary function at each airport. Culpeper Regional Airport (KCJR) and Warrenton-Fauquier Airport (KHXY) both average over 100 aircraft operations per day, while Orange County Airport (KOMH) and Gordonsville Municipal Airport (KGVE) average less than 30 aircraft operations per day. (Source: [www.airnav.com](http://www.airnav.com))

## TOURISM STATISTICS

2007 Expenditures (Estimated): \$260M  
2007 Employment (Estimated): 3,120  
2007 Payroll (Estimated): \$51.43M  
2007 Local Taxes Collected (Estimated): \$5.83M  
Source: Virginia Tourism Corporation

## SHENANDOAH NATIONAL PARK VISITATION

Year	Thornton Gap Entrance	Big Meadows Campground	Total Park Visitors
1996	386,389	69,198	1,600,132
2000	360,052	65,076	1,430,536
2004	351,240	66,939	1,271,959
2008	270,953	68,844	1,086,839

## FREDERICKSBURG/SPOTSYLVANIA NATIONAL MILITARY PARK VISITATION

Year	Wilderness BF Exhibit	Wilderness Battlefield	Total Park Visitors
1996	23,162	112,534	1,819,839
2000	19,741	135,110	1,787,934
2004	19,107	201,179	1,646,422
2008	19,837	203,489	1,359,662

Source: National Park Service



## MEDIAN FAMILY INCOME, ESTIMATED (2008)

Culpeper	\$66,300
Fauquier	\$99,000
Madison	\$57,400
Orange	\$62,500
Rappahannock	\$67,300

Source: U.S. Dept. of Housing & Urban Development

## REGIONAL CONTACT INFORMATION

Rappahannock-Rapidan Regional Commission  
420 Southridge Parkway, Suite 106  
Culpeper, VA 22701  
Phone: (540) 829-7450  
Fax: (540) 820-7452  
Email: [planinfo@rrregion.org](mailto:planinfo@rrregion.org)  
[www.rrregion.org](http://www.rrregion.org)

Rappahannock-Rapidan  
REGIONAL COMMISSION